

Notable Changes

NEW TECHNOLOGY PLAN: 2008

Westmont Imaging Center is now open!

Westmont Imaging Center has been completely remodeled and now features a fireplace, stone and music to create a calming atmosphere. Not only has the atmosphere been upgraded, but so have the services offered. West-

mont Imaging Center now offers: *Digital Mammography, Ultrasound, MRI, Breast MRI, & Dexa Bone Scans*. Also, patients can park directly in front of the building so they do not have to walk long distances. To schedule an appointment call 630.856.7070.

Did You Know?

FREE CME'S FOR PHYSICIANS & NURSES!

Adventist Midwest Health now brings you MedNews Plus, a Web site offering breaking medical news and free CME to physicians and nurses, now on the keepingyouwell.com Web site. The site can be accessed by clicking on the MedNews Plus icon on the bottom left side of the page. There is also an icon on the "For Our Professionals" physician web page.

To get started, a physician or nurse needs to register as a user. You can fill out a card from your physician relations representative or you can enroll yourself at www.mednewsplus.com.

All content is peer-reviewed and CME-certified by the University Of Pennsylvania School Of Medicine, which is accredited by the Accreditation Council for Continu-

ing Medical Education (ACCME). All content is personalized - based on your specific interests!

If you register you will receive:

- Breaking health news by specialty with professional medical analysis
- Daily news reports that are peer-reviewed & CME-certified
- Opportunities to earn AMA PRA Category 1 Credit TM (CME)...Free (Physicians)
- Opportunities to earn (CE) Category A CERP credits... Free (Nurses)
- Hospital news highlights

Begin earning FREE CME/CE NOW!

Cerner & Imaging Reports

CERNER OUT-PATIENT TAB

Having trouble remembering which out-patient tests you ordered with our new electronic medical records system (Cerner/iConnect)?

A tab in Cerner can be built for you to automatically draw a list of your outpatients who had tests. This way, you do not have to remember all the patients you ordered tests for at the hospital. You can also designate the number of days back the computer will retrieve this information. If you would like to have this tab created,

you can either have the instructions e-mailed to you, or you can contact someone to set it up for you.

For Cerner help/questions, please call:

Michelle Dombrowski, iConnect Physician Liaison
Cell: 630.437.1145; Office: 630.856.2063

Beth Sheber, iConnect Physician Liaison

elizabeth.sheber@ahss.org; cell: 630.200.3209

IMAGING & ONCOLOGY UPDATE

VOLUME 3, ISSUE 1 : FIRST QUARTER 2008

Welcome

FROM THE EDITOR

In this issue, you will find updated information on a new interventional radiology procedure from a physician on staff at Adventist La Grange Memorial Hospital and Adventist Hinsdale Hospital, Dr. Frank Facchini.

Additionally, there is information on our new CME program offered by Adventist Midwest Health. This is an online program that will track the CME's for the user and send newsworthy medical information specific to the specialties chosen.

Electronic copy: For those interested, an electronic version of the quarterly newsletter is available – send an email to toni.eckert@ahss.org requesting to be added to the mailing list.

The 2008 new technology plan on page 4 highlights the new technologies AMH is committed to this year. If you have questions, comments or articles to submit, please contact Heather Susnik at 630-856-7448 or heather.susnik@ahss.org.

TheraSphere®

ADVENTIST HINSDALE HOSPITAL RECEIVES YTTRIUM-90 APPROVAL

The Vascular and Interventional Radiology team in cooperation with Radiation Oncology, Nuclear Medicine, and Medical Physics under the supervision of the IRB, received approval from the Nuclear Regulatory Commission and Illinois Emergency Management Agency for treatment of unresectable primary and metastatic liver neoplasms with Yttrium-90 glass microspheres (TheraSphere).

Background

Most current treatments for unresectable (inoperable) liver cancer can require hospitalization and usually cause side effects that reduce the quality of life for patients. For example, chemotherapy and chemoembolization often produce nausea, vomiting and hair loss. (For more information on these therapeutic treatment options visit the National Cancer Institute website.)

Previous attempts to treat liver cancer with radiation from external sources (radiation beam therapy) showed

some easing of symptoms, suggesting liver cancer is sensitive to radiation. But there is a major drawback to external radiation: it cannot be tightly focused on the tumor, but instead, affects a larger area of the body that includes the tumor.

This lack of precise focus exposes healthy areas of the body to radiation and produces unpleasant side effects, including changes to healthy tissue, nausea and vomiting. Therefore, researchers began to develop ways to place radiation directly into the liver, targeted as precisely at the tumors as possible, with the least effect on healthy liver tissue.

TheraSphere® builds upon growing medical knowledge of liver structure and function as well as previous experience with other types of therapy to offer a new, more convenient treatment op-

FRANK FACCHINI, M.D.
Interventional Radiologist

INSIDE

TheraSphere® - 1-3

New Technology - 4

Free CMEs - 4

Cerner & Imaging - 4

Physician Referral Call Center: 630-856-7500

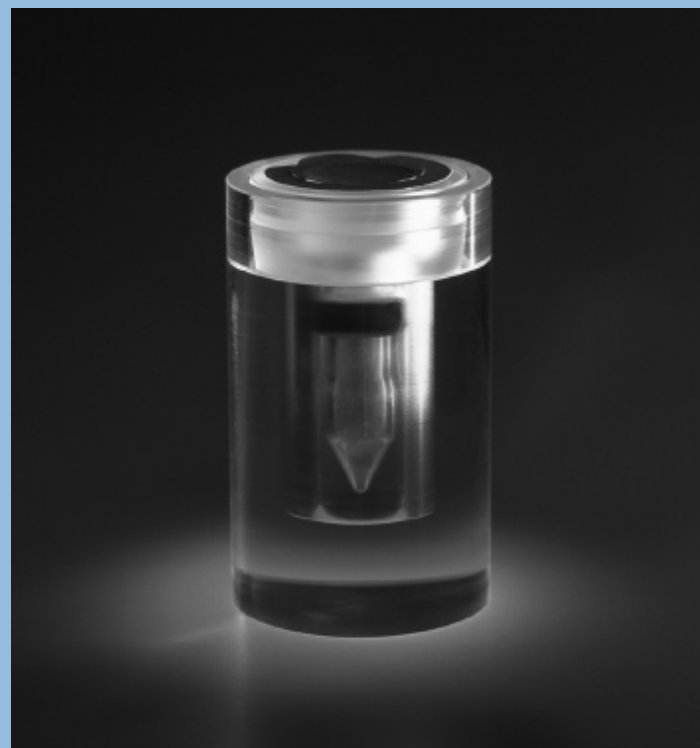
Central Scheduling: 630-856-7070

www.keepingyouwell.com

Theraspheres®

INTERVENTIONAL RADIOLOGY

tion. TheraSphere® also builds on knowledge physicians have gained in recent years with brachytherapy, radioactive implants that are now increasingly used to treat prostate cancer or surrounding organs.



Procedure

To direct TheraSphere® treatment at tumors in the liver, a physician first makes a small incision in the patient's groin and places a catheter into the femoral artery. Guided by fluoroscopy the physician then moves the catheter up through the blood vessels to the hepatic artery, which is one of two blood vessels feeding the liver. The physician guides the catheter into the branch of the hepatic artery feeding the cancerous tumor in the liver and infuses the TheraSphere® beads through the catheter into the blood that supplies the tumor. This will be an outpatient procedure performed in our hospital's interventional radiology suite with patients remaining conscious throughout the procedure. It is estimated the vast majority of unresectable pri-

FRANK FACCHINI, M.D.
INTERVENTIONAL RADIOLOGIST

mary and metastatic liver cancer patients are potentially good candidates for catheter placement and TheraSphere administration. This is the result of recent improvements in patient selection and improved technical skills in catheter placement.

However, physicians and patients should be aware of potential problems that can occur if TheraSphere® is not correctly placed in the liver, which can lead to serious side effects in the gastrointestinal (GI) tract or lungs. These usually only occur in patients who have unusual or severely damaged liver blood vessels.

Our Patient Evaluation Process

Prior to TheraSphere administration, patients will be seen in our Interventional Radiology Clinic. A complete evaluation will be done to determine if they are a candidate for liver directed therapy. All modalities of treatment including RF ablation, Cryoablation and standard embolization will also be considered. If imaging is not already provided, the IR Oncologic Clinical Coordinator will organize diagnostic imaging, as well as labs, staging documentation and pre-procedural medications. A complete clinic note, history and physical will be sent to the referring physician.

FAQ's from Therasphere®

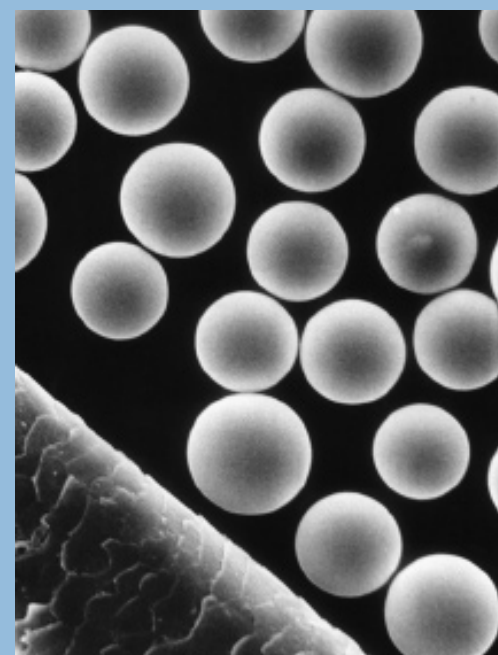
TheraSphere® Therapy: Are you a candidate?

TheraSphere® is designed to treat inoperable liver cancer with radioactive microspheres placed directly in the liver. TheraSphere® can also be used to help maintain patients whose liver is unable to be treated surgically for resection or transplantation.

In all cases, the decision for treatment with TheraSphere® is up to your physician or cancer specialist, who is most familiar with your case and the various available treatments for liver cancer.

Are there any risks associated with TheraSphere® use?

It is estimated that the vast majority of patients are potentially good candidates for catheter placement. This is the result of recent improvements in patient selection and improved technical skills in catheter placement.



Microsphere compared to the size of a human hair

However, physicians and patients should be aware of potential problems that can occur if TheraSphere® is not

correctly placed in the liver, which can lead to serious side effects in the gastrointestinal (GI) tract or lungs. These usually only occur in patients who have unusual or severely damaged liver blood vessels.

Prior to TheraSphere administration, patients are screened to determine if they are at risk for the side effects in the GI tract or lungs.

Will insurers pay for TheraSphere® treatment?

TheraSphere reimbursement is specific to your geographic region. Please consult Reimbursement on the TheraSphere Web site for more information.

How much does treatment with TheraSphere® cost?

Treatment costs will vary, based upon the number of required treatments and how treatments are administered in the institution. Please contact your physician or a Treatment Center for more information.

Schedule a Consult

Patients can be scheduled by calling 630-856-7460. Patients can often be seen within 24 hours. Where there are exclusionary criteria for Therasphere treatment itself, patients may often be candidates for other Interventional Radiology Liver directed treatments. Therefore, if you have a patient you believe may be a candidate, please don't hesitate to call.

More information is available at <http://www.mds.nordion.com/therasphere/index.asp>.

Your Interventional Radiology/TheraSphere Team:

Frank Facchini, M.D., VIR
Luke Sewall, M.D., VIR
Steve Smith M.D., VIR
Tom Vlahos M.D., VIR
Debbie Cusack, RT(R)(CV)
Penny Greenwood, RN
Anna Hawbecker, RT(R)(VI)
Betty Vojtik, RN

Radiation Oncology & Medical Physics:

Jeffery Feinstein, M.D., Radiation Oncology
Michael Ocasio, Medical Physics

Physician Referral Call Center: 630-856-7500
Central Scheduling: 630-856-7070
www.keepingyouwell.com